

Directions

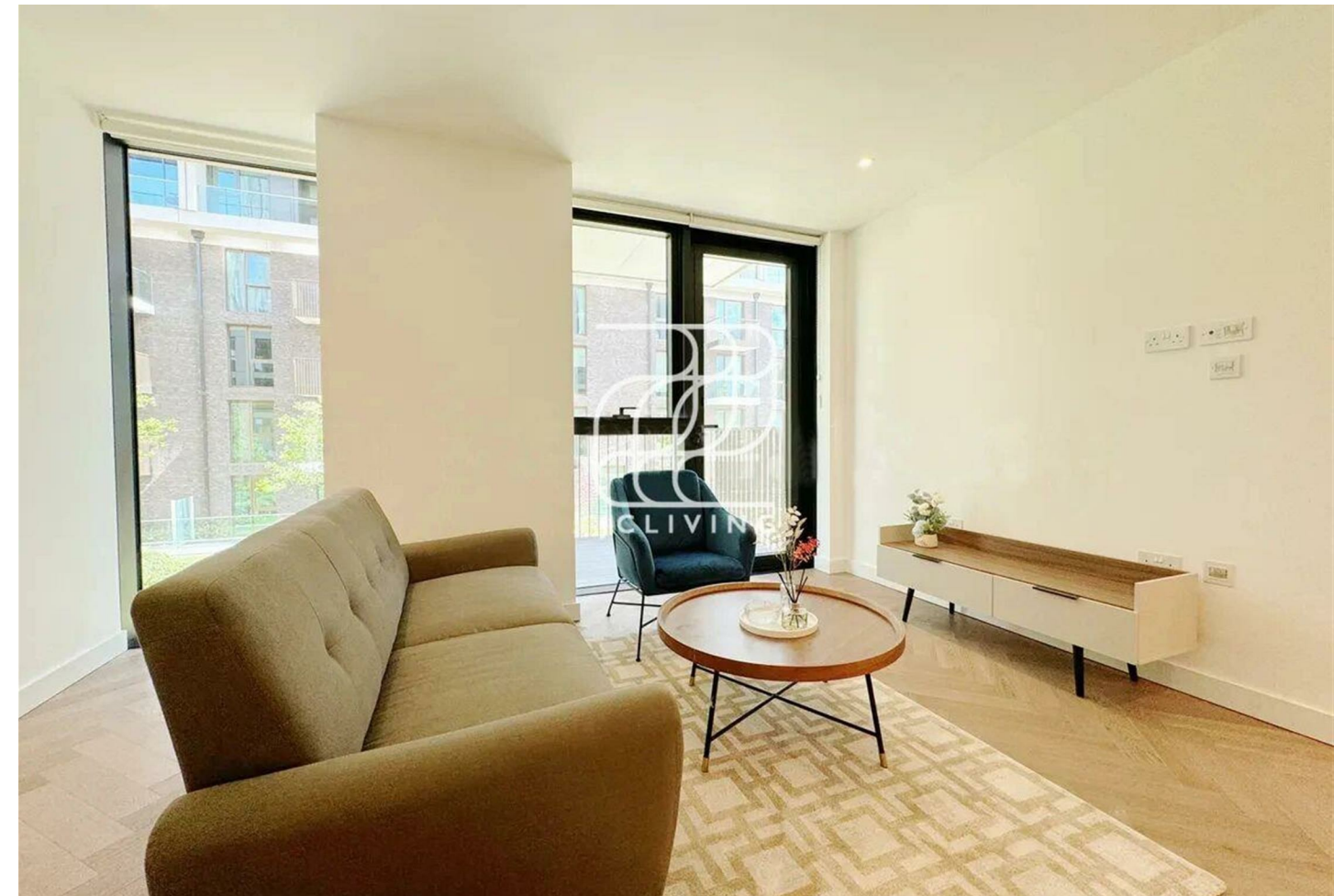
Viewings

Viewings by arrangement only. Call 02033696888 to make an appointment.

EPC Rating

B

Energy Efficiency Rating		Current	Potential
Very energy efficient - lower running costs			
(92 plus) A			
(81-91) B		85	85
(69-80) C			
(55-68) D			
(39-54) E			
(21-38) F			
(1-20) G			
Not energy efficient - higher running costs			
England & Wales		EU Directive 2002/91/EC	



£739 Per Week

23 Gauging Square, London E1W 2AW

Please quote reference JC24101614 when contacting the office.

JCLiving is proud to present this stylish one-bedroom, one-bathroom apartment at London dock.

Located within Cashmere Wharf at the prestigious London Dock development, this contemporary home designed by world-renowned architects Patell Taylor offers the perfect blend of modern luxury and urban convenience in the heart of Wapping.

Superbly located, Tower Hill Underground Station (District & Circle lines) and Tower Gateway DLR are within easy walking distance, with St Katharine Docks, Tower Bridge and riverside walks moments away.

EPC Rating: B
Council: Tower Hamlets
Council Tax Band: F

Viewings are warmly welcomed.



Council Tax Band: F

